

**POWERPIN INC.**

*"Hitching For Business"*

## **AG-IMPLEMENT HITCHES**



Implement Hitches Distributed by:

  
**NORTHFIELD**  
INDUSTRIES



# WE PROVIDE MORE THAN JUST HITCHES

**Over 30 years of expertise to insure manufacturers have the right hitch in the right application.**

Power Pin is the expert in drawbar hitching having supplied the compatible Drop Pin hammer strap to tractor manufactures since 1997 as a standard factory feature for Deere , CASE , New Holland, Versatile, Claas, Fendt, JCB, McCormick and many other tractor manufactures on tractors 150 HP and over. Power Pin was the leader in developing ISO 21244 the Implement Hitch Standard and Brian Olson was recognized by ASABE in 2018 for outstanding contributions to ASABE Standards and safety within the agricultural industry winning the ASABE Evelyn E. Rosentreter Award.

For thirty years Power Pin's cast implement hitches have been in the field and customers can rest assured they are buying the best design at the best value.



# AGRICULTURAL HITCHES

Hitching Power Pin's 30 years of expertise in the AG Equipment industry and Northfield Industries distribution and excellent service to their customers; together we provide a full line of AG Hitches.



**For hitches, hubs, spindles and jacks it's one purchase order with one shipment through Northfield Industries!**

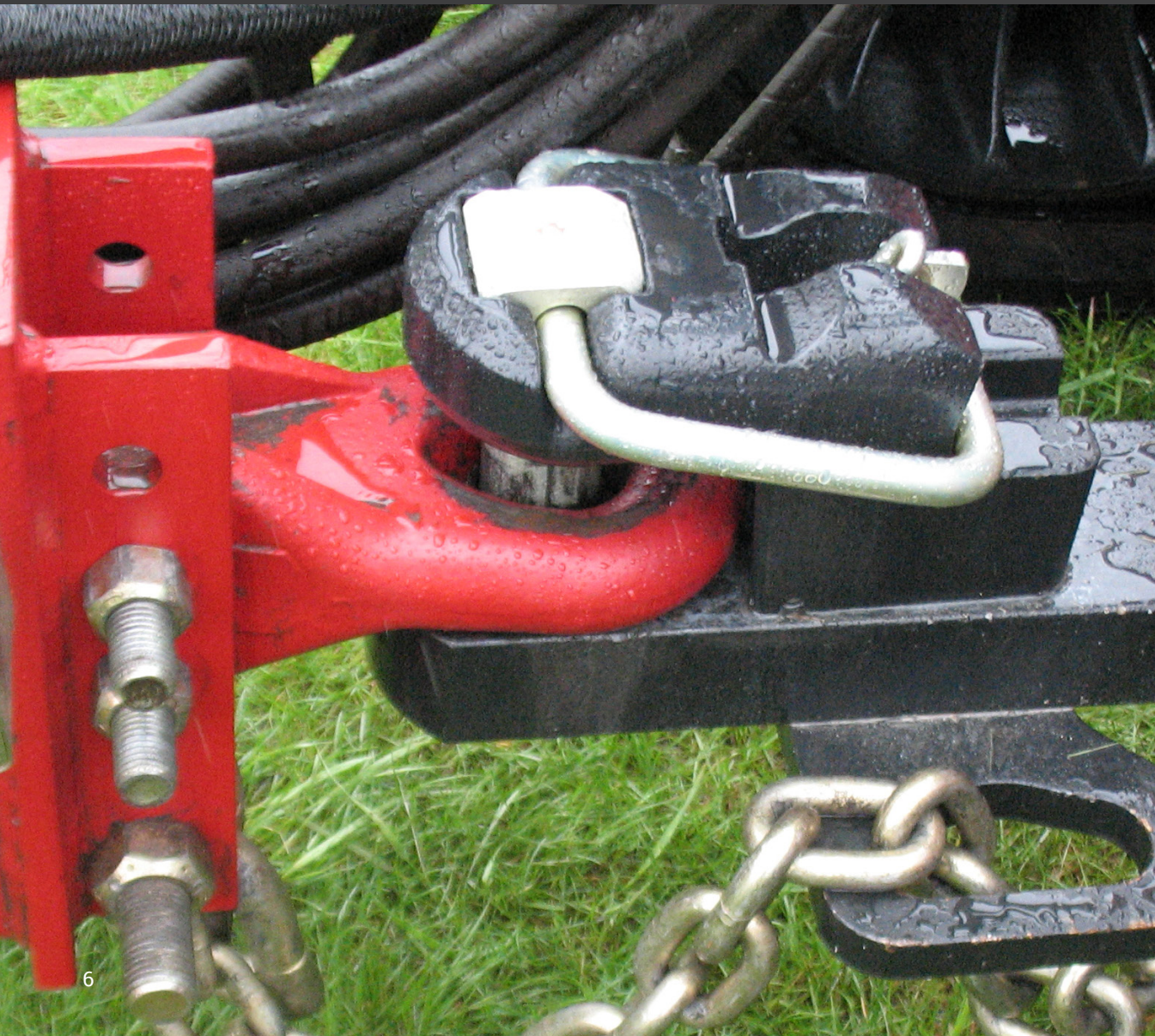


# RING HITCHES

The new Clevis / Ring Implement Hitch insures the manufacturer meets the Implement Ring Standard and allows their customer to quickly and easily switch tractors and implements around seamlessly and without any tools.

Designed with a larger contact wear area that reduces wear on the ring hitch plus a bolt on clevis that always stays with the ring hitch.

Simply loosen the bolt and swing the clevis to the side when it is not required.

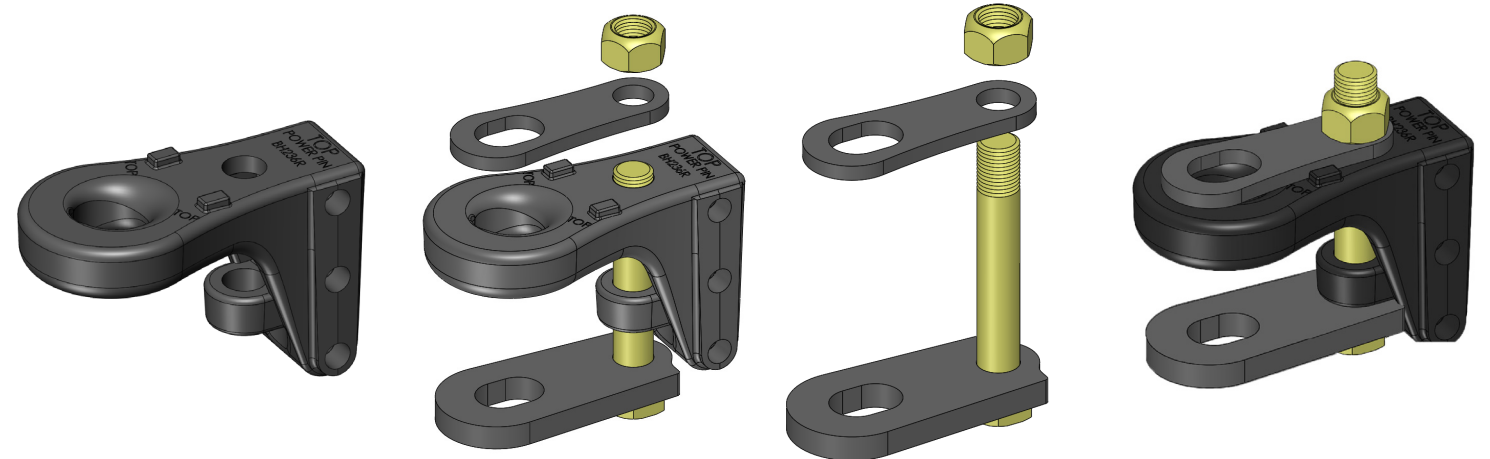
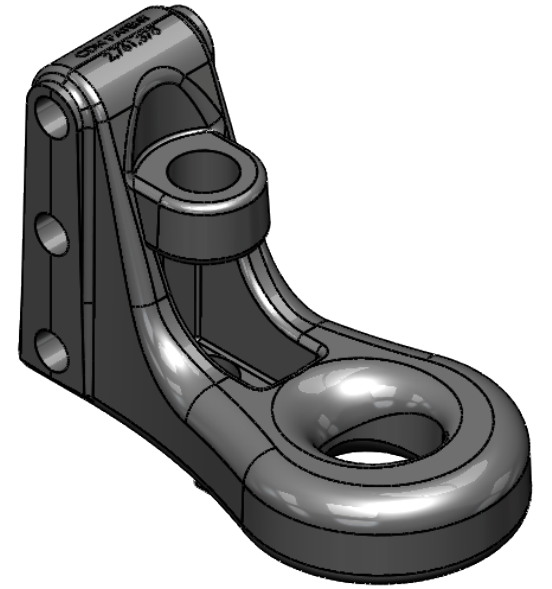


patent protected clevis ring hitches

## Category 2 Ring Hitch

**3 HOLE** BH236-2R

Rated for a Draft Load of **55,000 lbs**



### CAPACITY

3,700 lbs Max. Vertical Load  
55,000 lbs Max. Draft Load  
Max. Drawpin Size 1.50"  
Up to 154 H.P.



### FEATURES

Ring-Hitch design allows for articulation while having a flat surface on the inner ring to reduce wear.  
Hitch Bracket thickness -1/2" minimum (not supplied)



### MOUNTING DIMENSIONS

Mounting holes 2" apart with 5/8" holes and base width 2.75".  
Use (3) 5/8" Diameter grade 8 bolts. (Not included)

All hitches are designed in accordance to ISO 21244-2008

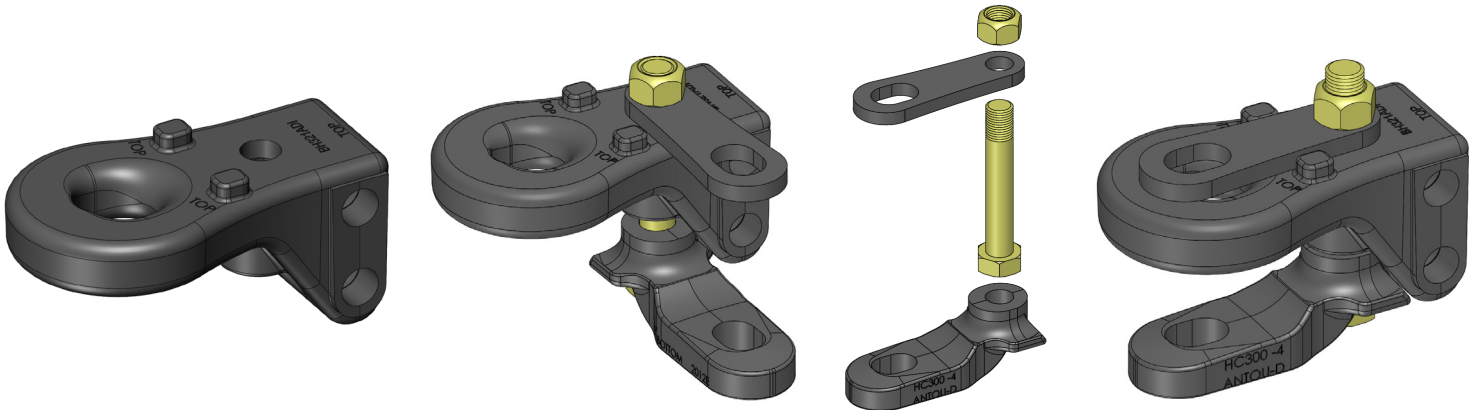
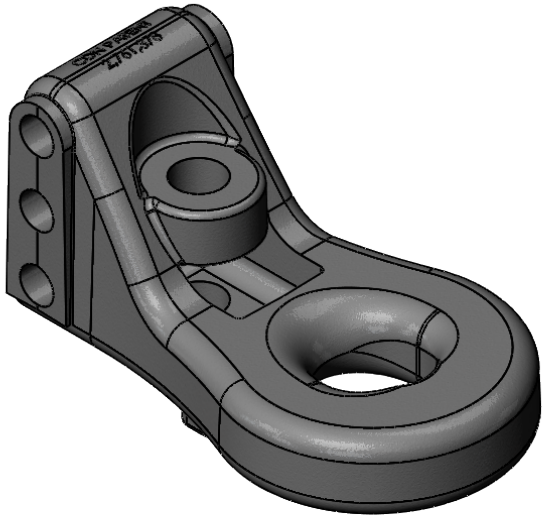
**NORTHFIELD**  
INDUSTRIES

**POWERPIN INC.**  
"Hitching For Business"



# Category 3 Ring Hitch

**2 HOLE** BH321ADI  
 Rated for a Draft Load of **108,000 lbs**



**CAPACITY**  
 9500 lbs Max. Vertical Load  
 108,000 lbs Max. Draft Load  
 Max. Drawpin Size 2"  
 Up to 248 H.P.



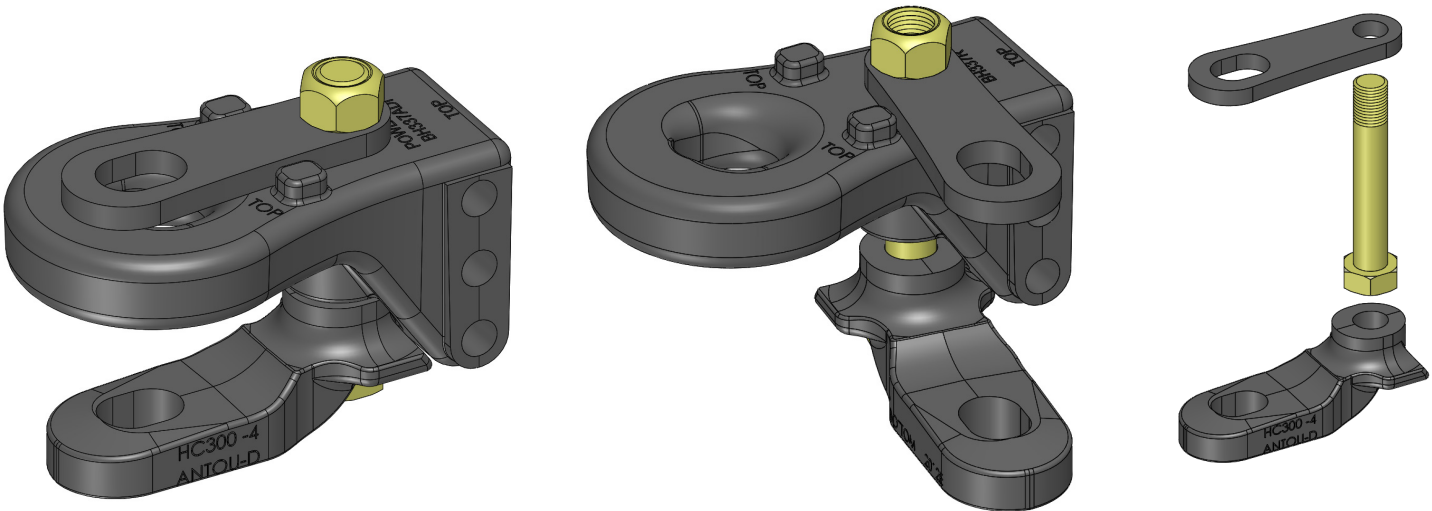
**FEATURES**  
 Ring-Hitch design allows for articulation while having a flat surface on the inner ring to reduce wear.  
 Hitch Bracket thickness - 5/8" minimum (not supplied)



**MOUNTING DIMENSIONS**  
 Mounting holes 2.25" apart with 1" holes and base width 4".  
 Use (2) 1" Diameter grade 8 bolts. (Not included)

# Category 3 Ring Hitch

**3 HOLE** BH337R  
 Rated for a Draft Load of **97,000 lbs**



**CAPACITY**  
 7,000 lbs Max. Vertical Load  
 97,000 lbs Max. Draft Load  
 Max. Drawpin Size 2.00"  
 Up to 248 H.P.



**FEATURES**  
 Ring-Hitch design allows for articulation while having a flat surface on the inner ring to reduce wear.  
 Hitch Bracket thickness - 5/8" minimum (not supplied)

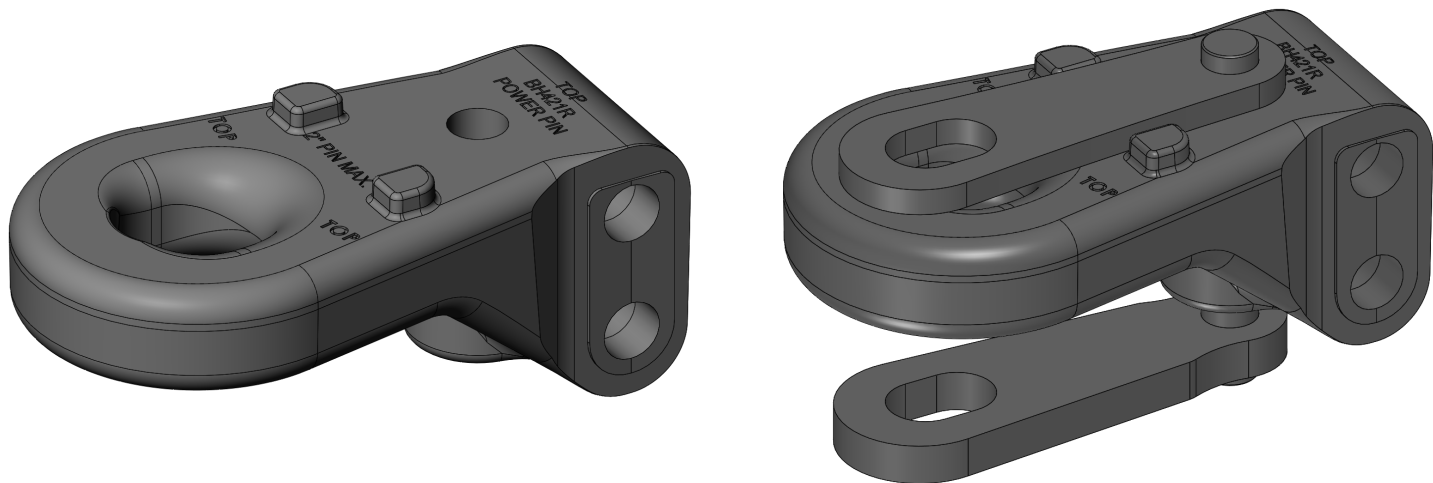


**MOUNTING DIMENSIONS**  
 Mounting holes 1.5" apart with 3/4" holes and base width 4".  
 Use (3) 3/4" Diameter grade 8 bolts. (Not included)



# Category 4 Ring Hitch

**2 HOLE** BH421ADI  
 Rated for a Draft Load of **120,000 lbs**



**CAPACITY**  
 10,000 lbs Max. Vertical Load  
 120,000 lbs Max. Draft Load  
 Max. Drawpin Size 2"  
 Up to 402 H.P.



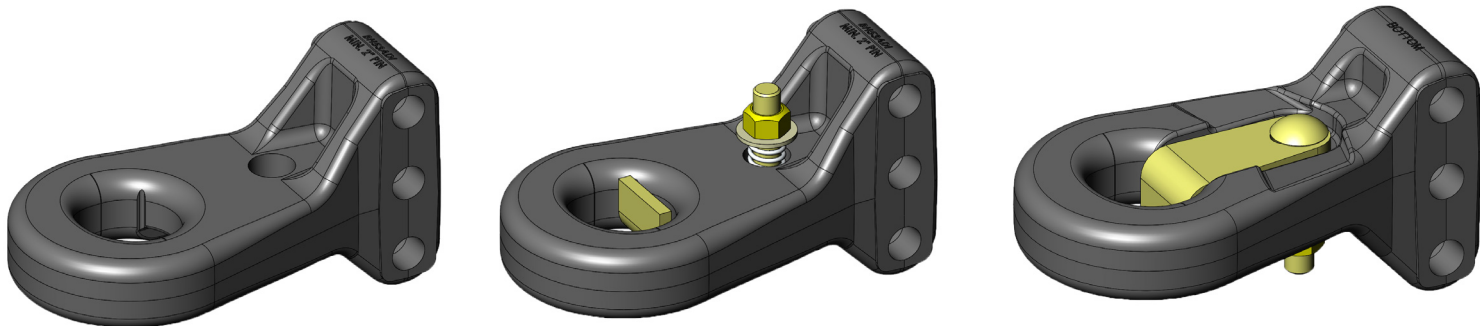
**FEATURES**  
 Ring-Hitch design allows for articulation while having a flat surface on the inner ring to reduce wear.  
 Hitch Bracket thickness -3/4" minimum (not supplied)



**MOUNTING DIMENSIONS**  
 Mounting holes 2.25" apart with 1" holes and base width 4".  
 Use (2) 1" Diameter grade 8 bolts. (Not included)

# Category 5 Ring Hitch

**3 HOLE** BH53ADI  
 Rated for a Draft Load of **135,000 lbs**



**CAPACITY**  
 12,000 lbs Max. Vertical Load  
 135,000 lbs Max. Draft Load  
 Max. Drawpin Size 2.75"  
 Up to 670 H.P.



**FEATURES**  
 Ring-Hitch design allows for articulation while having a flat surface on the inner ring to reduce wear.  
 Hitch Bracket thickness -7/8" minimum (not supplied)



**MOUNTING DIMENSIONS**  
 Mounting holes 2.25" apart with 1" holes and base width 4".  
 Use (3) 1" Diameter grade 8 bolts. (Not included)



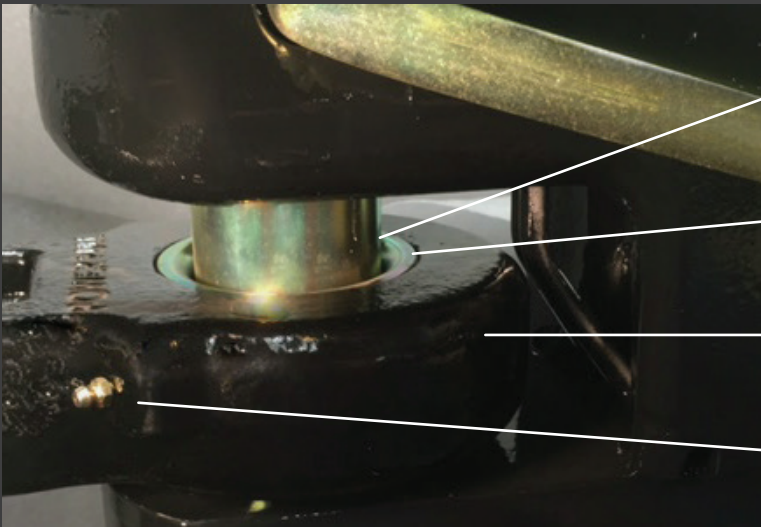
# NEW AGRICULTURAL IMPLEMENT AB HITCHES

With the 600 HP plus tractors our industry has reached the limits of a steel to steel drawpin/ring connection. Only by increasing contact area can we prolong the life of the tractor drawpin and implement ring hitch.

This quick change option of the AB Hitch is unique as no tools are required! If the operator does not want to change out the spherical bushing, an optional flanged bushing drops in the ball to reduce the drawpin hole size for smaller tractor drawpins. Simple and cost effective – an Industry exclusive!

Farmers are the driving force of this improvement, demanding a better connection while reducing their costs of replacing old style ring hitches, and expensive tractor drawpins. Implement manufactures are adopting the AB Hitch on their implements as it addresses the age old problem of wear and too much play in the connection.

Simply turn the spherical bushing half a turn to take out and replace with a new bushing that matches the category of tractor.



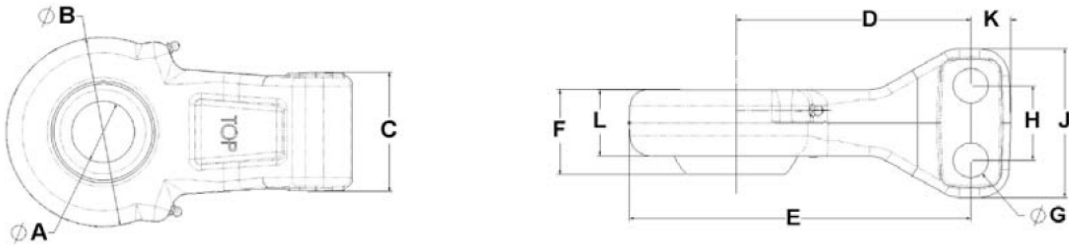
Huge contact area dramatically reduces draw pin and implement ring hitch wear

Tapered spherical bushing makes for easier hook up

The design of the AB Hitch allows for 45 degrees of articulation

Grease zerts are protected at the back of the AB Hitch

patent protected articulating ball hitches



- A = Draw Pin Size
- B = Ball Housing Diameter
- C = Receiver Width
- D = Draw Pin to Hole Mounting
- E = Nose to Hole Mounting
- F = Ball Thickness
- G = Bolt Hole Size
- H = Bolt Hole Distance
- Number of Bolts in Receiver
- J = Receiver Height
- K = Hole Centre to Back
- L= Tongue Thickness
- Weight (lbs.)

CATEGORY 3					CATEGORY 4					CATEGORY 5	
BH3SABLA	BH3SABA	BH3SABSA	BH3SAB3HA	BH3SAB3HSA	BH4SABA	BH4SABSA	BH4SAB3HA	BH4SAB3HSA	BH4SAB3HSSA	BH5SABA	BH5SABSA
2"	1.5"	1.25"	1.5"	1.25"	2"	1.5"	2"	1.5"	1.25"	2.75" or 2"	2"
5.62"	5.62"	5.62"	5.62"	5.62"	5.8"	5.8"	5.62"	5.62"	5.62"	7.25"	7.25"
3.96"	3.96"	3.96"	3.96"	3.96"	3.96"	3.96"	3.96"	3.96"	3.96"	3.96"	3.96"
6.91"	6.91"	6.91"	6.32"	6.32"	6.92"	6.92"	7"	7"	7"	7.57"	7.57"
9.72"	9.72"	9.72"	9.12"	9.12"	10.07"	10.07"	9.82"	9.82"	9.82"	11.20"	11.20"
2.66"	2.53"	2.53"	2.53"	2.53"	2.66"	2.53"	2.66"	2.53"	2.53"	2.88"	2.75"
1"	1"	1"	.77"	.77"	1"	1"	1"	1"	1"	1"	1"
2.25"	2.25"	2.25"	1.5"	1.5"	2.25"	2.25"	2.25"	2.25"	2.25"	2.25"	2.25"
2	2	2	3	3	2	2	3	3	3	3	3
4.5"	4.5"	4.5"	4.5"	4.5"	4.5"	4.5"	6.75"	6.75"	6.75"	6.75"	6.75"
1.18"	1.18"	1.18"	.87"	.87"	1.18"	1.18"	1.18"	1.18"	1.18"	1.18"	1.18"
1.94"	1.94"	1.94"	1.88"	1.88"	2"	2"	2.06"	2.06"	2.06"	2.38"	2.38"
25.5	25.5	25.5	22.8	23	27	27	31	31	31	41.8	42.8

### REPLACEMENT BUSHINGS

HM31B	Spherical Bushing Cat. 3 & 4	2.00" ID
HM32B	Spherical Bushing Cat. 3 & 4	1.50" ID
HM33B	Spherical Bushing Cat. 5	2.75" ID
HM36B	Spherical Bushing Cat. 3	1.25" ID
HM42B	Spherical Bushing Cat. 5	2.00" ID

### FLANGED BUSHING OPTIONS

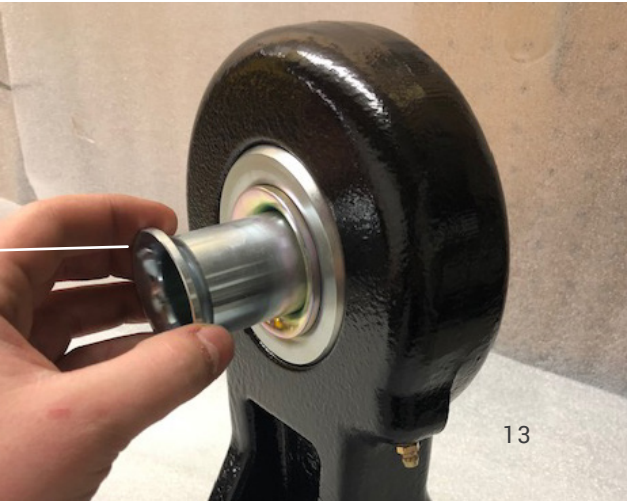
HM34F	Flanged Bushing Cat 5.	2.0" ID
HM35F	Flanged Bushing Cat 3 & 4	1.50" ID & 2.00" OD
HM37F	Flanged Bushing Cat 3 & 4	1.25" ID & 2.00" OD
HM38F	Flanged Bushing Cat 3 & 4	1.25" ID & 1.50" OD



We provide custom made mount-ups to meet your needs.

Step-down flange makes it easy to adapt to smaller drawpins insuring a tight connection.

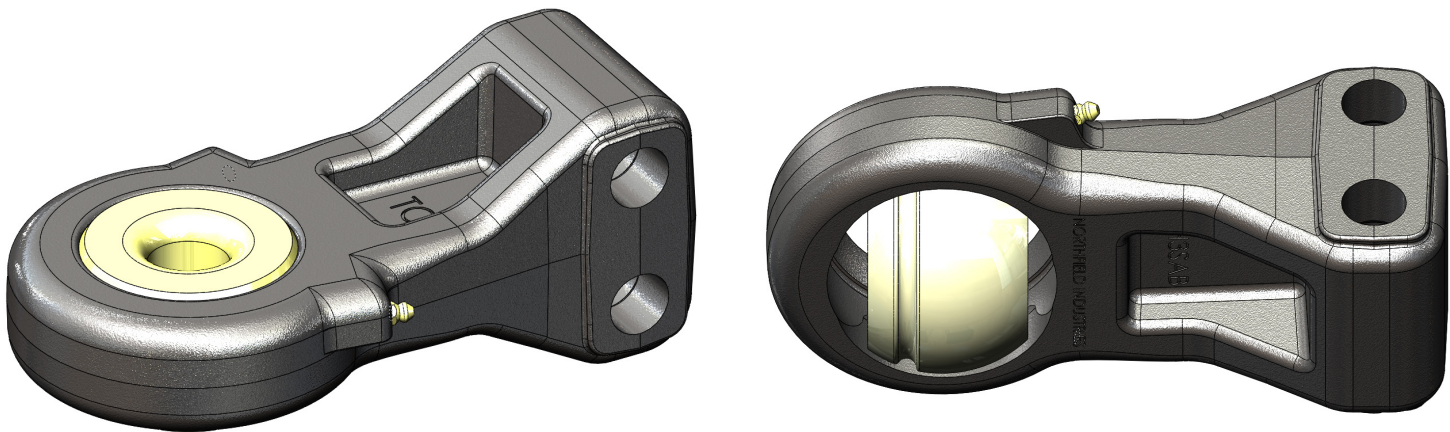
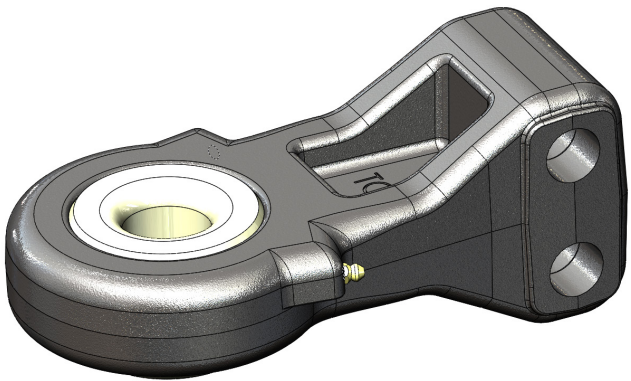
All hitches are designed in accordance to ISO 21244-2008





# Category 3 Ball Hitch

**2 HOLE** BH3SABA  
 Rated for a Draft Load of **77,000 lbs**



**CAPACITY**  
 22,000 lbs Max. Vertical Load  
 77,000 lbs Max. Draft Load  
 Max. Drawpin Size X"  
 Up to 248 H.P.



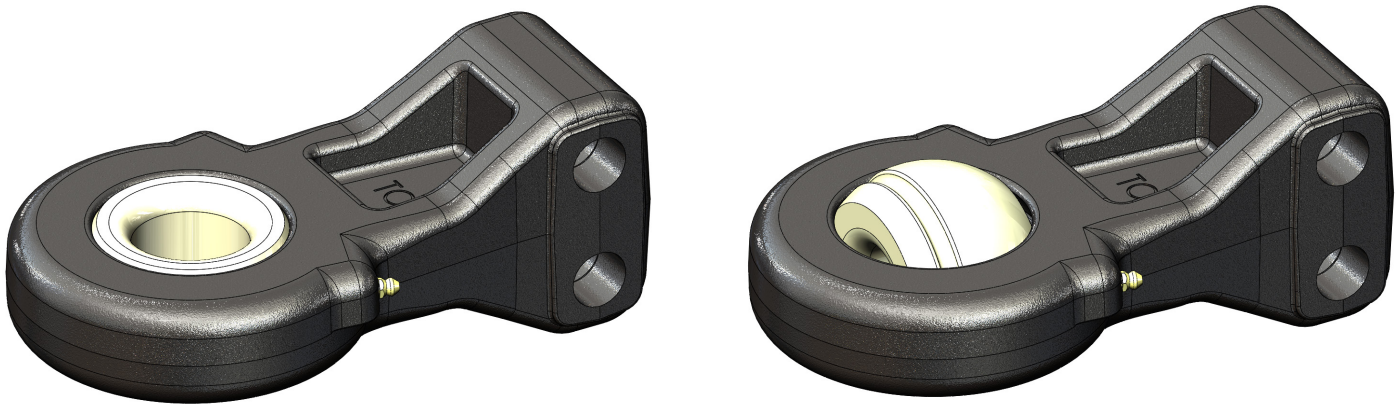
**FEATURES**  
 The design of the AB Hitch allows for 45 degrees of articulation. Huge contact area dramatically reduces draw pin and implement ring hitch wear.  
 Hitch Bracket thickness - 5/8" minimum



**MOUNTING DIMENSIONS**  
 Mounting holes 2.25" apart with 2" holes and base width 4".  
 Use (2) 1" Diameter grade 8 bolts. (Not included)

# Category 4 Ball Hitch

**2 HOLE** BH4SABA  
 Rated for a Draft Load of **114,000 lbs**



**CAPACITY**  
 25,000 lbs Max. Vertical Load  
 114,000 lbs Max. Draft Load  
 Max. Drawpin Size 2"  
 Up to 402 H.P.



**FEATURES**  
 The design of the AB Hitch allows for 45 degrees of articulation. Huge contact area dramatically reduces draw pin and implement ring hitch wear.  
 Hitch Bracket thickness - 3/4" minimum

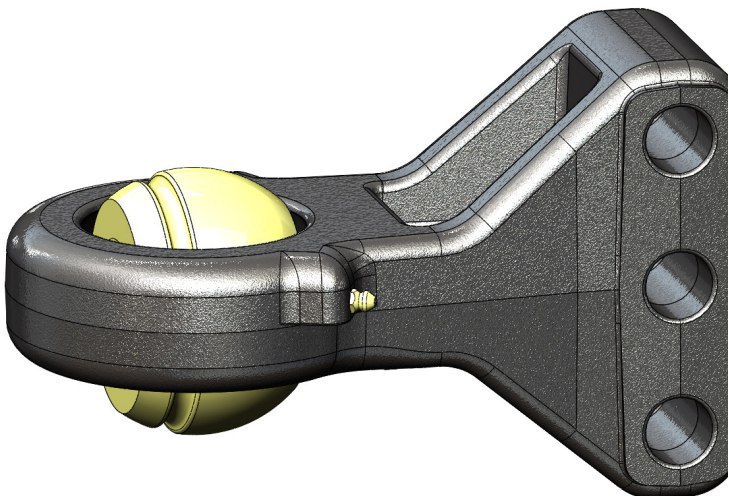


**MOUNTING DIMENSIONS**  
 Mounting holes 2.25" apart with 1" holes and base width 4".  
 Use (2) 1" Diameter grade 8 bolts. (Not included)



# Category 4 Ball Hitch

**3 HOLE** BH4SAB3HA  
Rated for a Draft Load of **131,000 lbs**



## CAPACITY

25,000 lbs Max. Vertical Load  
131,000 lbs Max. Draft Load  
Max. Drawpin Size 2"  
Up to 402 H.P.



## FEATURES

The design of the AB Hitch allows for 45 degrees of articulation. Huge contact area dramatically reduces draw pin and implement ring hitch wear. Hitch Bracket thickness - 3/4" minimum

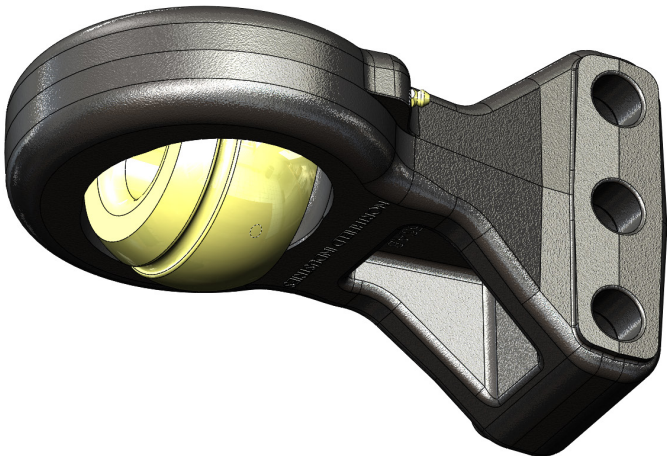
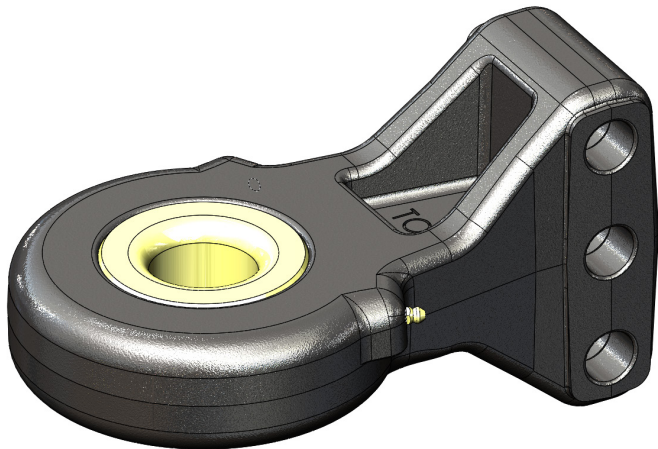
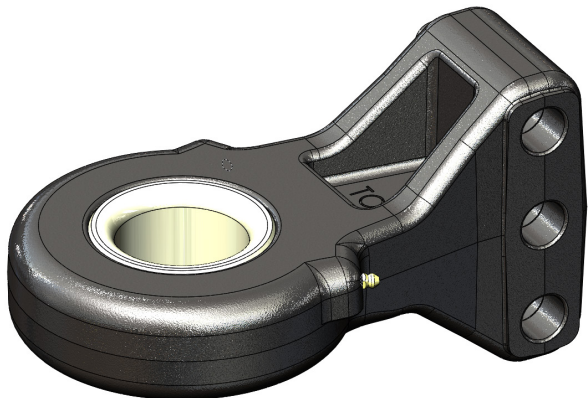


## MOUNTING DIMENSIONS

Mounting holes 2.25" apart with 1" holes and base width 4". Use (3) 1" Diameter grade 8 bolts. (Not included)

# Category 5 Ball Hitch

**3 HOLE** BH5SABA  
Rated for a Draft Load of **139,000 lbs**



## CAPACITY

30,000 lbs Max. Vertical Load  
139,000 lbs Max. Draft Load  
Max. Drawpin Size 2.75"  
Up to 670 H.P.



## FEATURES

The design of the AB Hitch allows for 45 degrees of articulation. Huge contact area dramatically reduces draw pin and implement ring hitch wear. Hitch Bracket thickness - 7/8" minimum



## MOUNTING DIMENSIONS

Mounting holes 2.25" apart with 1" holes and base width 4". Use (3) 1" Diameter grade 8 bolts. (Not included)



# AG HITCH LOAD RATINGS

## RING HITCH LOAD RATINGS

		MATERIAL	W.L.L. MAX. VERTICAL LOAD	W.L.L. MAX. DRAFT LOAD
CAT. 2 UP TO 154 HP	BH236-2R	D80	3,700 lbf	55,000 lbf
CAT. 3 UP TO 248 HP	BH337R	D80	7,000 lbf	97,000 lbf
	BH337ADI	ADI Grade 4	9,500 lbf	108,000 lbf
	BH321R	D80	7,000 lbf	97,000 lbf
	BH321IH	D80	7,000 lbf	97,000 lbf
	BH321ADI	ADI Grade 4	9,500 lbf	108,000 lbf
	HC300 – Hitch Clevis	D80	3,000lbf	36,000 lbf
CAT. 4 UP TO 402 HP	BH421ADI	ADI Grade 4	10,000 lbf	120,000 lbf
CAT. 5 UP TO 670 HP	BH53ADI	ADI Grade 3	12,000 lbf	135,000 lbf

## ARTICULATING BALL HITCH LOAD RATINGS

		MATERIAL	MAX. VERTICAL LOAD	MAX. DRAFT LOAD
CAT. 3 UP TO 248 HP	BH3SABA 1 ½" & 1 ¼" pin	ADI Grade 3	22,000 lbf	77,000 lbf
	BH3SAB3HA 1 ½" & 1 ¼" pin	ADI Grade 3	22,000 lbf	95,000 lbf
Hitch Bracket Plate thickness – 5/8" Minimum - 5/16" penetration weld from both sides.				
CAT. 4 UP TO 402 HP	BH4SABA 2" & 1 ½" pin	ADI Grade 3	25,000 lbf	114,000 lbf
	BH4SAB3HA 2" & 1 ½" pin	ADI Grade 3	25,000 lbf	131,000 lbf
	BH4ROA 2" & 1 ½" pin	ADI Grade 3	25,000 lbf	135,000 lbf
Hitch Bracket Plate thickness – 3/4" Minimum - 3/8" penetration weld from both sides.				
CAT. 5 UP TO 670 HP	BH5SABA 2 ¾" & 2" pin	ADI Grade 3	30,000 lbf	139,000 lbf
Recommended Hitch Bracket thickness – 7/8" Minimum - 7/16" penetration weld from both sides.				

When mounting Hitch into Bracket there should be no play between hitch and bracket.  
If so, use shims or washers to take up the slack before using Gr.8 bolts to mount it tight.  
This is to help from shearing off the bolts when under extreme side loads.

Hubs & Spindles

Tongue Jacks & Hitches

Machined Products



**Key Attributes:**  
Available in 4 – 10 bolt pattern  
Up to 32,000 lb. rating  
Fully customizable to spec  
Assembly in house

**Key Attributes:**  
**Jacks:** Up to 12,000 lb. load rating fully customizable to spec with warranty.  
**Hitches:**  
AG Implement  
Articulating Ball Hitches and Clevis  
Ring Hitches, from Cat 2 through Cat 5.

**Key Attributes:**  
Up to 17,000 lb. parts  
Turn parts 3/8"-78"  
Machining capabilities in U.S. & China  
Full fabricating & welding

Contact Us  
US Head Office 847-775-0700  
700 Wiley Farm Court  
Schaumburg. IL 60173

Canada Sales 204-697-0240



**Implement Hitches Distributed by:**



700 Wiley Farm Court  
Schaumburg, IL 60173



US Head Office 847-775-0700



Canada Sales 204-697-0240



[www.northfieldindustries.com](http://www.northfieldindustries.com)

***POWERPIN INC.***

*"Hitching For Business"*

**For information on Power Pin's line of  
AG-Implement Hitches contact us:**



598 - Second Street East  
Fort Qu'Appelle, Sask. S0G 1S0



(306) 332-5034



[powpin1@sasktel.net](mailto:powpin1@sasktel.net)



[www.powerpin.ca](http://www.powerpin.ca)